



Over 12,500 trained  
around the world since  
1995

Practiced in over 58  
countries

Named an Evidence  
Based Practice by  
SAMHSA

Endorsed by Dan Hughes,  
Daniel Siegel, Eliana Gil,  
Bessel van der Kolk,  
Stephen Porges and  
more...

Theraplay is trauma-  
informed and can be  
utilized in cases of  
complex, relational and  
developmental trauma

Theraplay is a relatively  
short term treatment  
that can lead to positive  
change in families from  
the first session

Theraplay Supervisors  
are highly skilled and  
crossed-trained

Theraplay training  
provides a rich, clinical  
learning experience and  
a wide variety of follow  
up support

Students choose their  
own pace and goals,  
with three levels of  
certification

## The Theraplay Institute's UK Training and Certification Program

The Theraplay Institute in conjunction with our UK Advisory Committee has developed standards and qualifications for Theraplay to reflect the specific and unique ways that Theraplay is practiced in the UK. As individuals in the UK from a wide variety of professional backgrounds are using Theraplay® Informed Practice to work with children and families in many settings, we have designed several programs to help facilitate best practice.

In addition to our training, we have professional development options to help you achieve a level of Theraplay best practice commensurate with your professional qualifications. The three tracks are:

- Theraplay Practitioner supervision practicum
- Group Theraplay Practitioner supervision practicum
- Continuing Professional Development opportunities for all

## What is the appropriate option for you?

- If you are an **accredited professional** or **member of an approved professional body** working with children and parents/carers, begin by attending our four-day Level One Theraplay & MIM. Then you may enter our Theraplay Practitioner practicum and earn status as a *Certified Theraplay® Practitioner* after as few as 24 supervised Theraplay sessions.
- If you **do not have a professional accreditation** but you work with children and parents/carers, begin by attending our four-day Theraplay & MIM training. Then you may enter our Theraplay Practitioner practicum and earn status as a *Certified Theraplay Foundational Practitioner®* after as few as eight supervised sessions. This is the highest, best practice certificate for those without a professional accreditation.
- If you are an accredited professional or Teacher and work primarily with children in **group settings** such as education and you do not usually work with their parents/carers as well, start by attending our two-day Group Theraplay training. Then you may join the Group Theraplay Practitioner practicum and earn status as a *Certified Group Theraplay® Practitioner* in as few as 16 supervised sessions.
- If you do not have a professional accreditation but work in schools in behavior support, pastoral work and the like, start by attending our two-day Group Theraplay training. Then, you may enter the Group Theraplay Practitioner practicum and earn status as a *Certified Group Theraplay® Foundational Practitioner* in as few as 8 supervised sessions.
- If entering the Theraplay practicum is not an option, you may still attend our training and then you may take advantage of continuing professional development opportunities sponsored by The Theraplay Institute. These include regional support group meetings, observing Theraplay supervision on-line, and attending Theraplay refresher/best practice workshops.

## Best Practice Guidelines and use of the Theraplay Trademark

Theraplay® is a registered trademark in the UK. We encourage those who attend Theraplay training to use the Theraplay principles and techniques in their own setting as follows:

- After attending Level One Theraplay and MIM or Group Theraplay training, trainees can describe their work as **Theraplay Informed Practice**, but cannot say that they are doing Theraplay or conducting Theraplay sessions. Students will be asked to sign a letter of understanding at the training indicating that they agree to the limits on how they can use and describe their Theraplay Informed work.
- If in the supervision practicum, students can say that they are working toward certification, including which certificate they are currently working toward.
- Upon receiving Foundational status, candidates may refer to this credential in addition to above.
- After completing the supervised practicum and all other requirements for Certification, practitioners may call themselves Certified Theraplay® Practitioners or Certified Group Theraplay® Practitioners and refer to their practice as Theraplay®.

Once trainees become fully certified, they can use the Theraplay name in written statements about their practice. At all times, the Theraplay service mark should be used correctly. All printed announcements, brochures, e-mail, web site announcements etc. should always use the service mark ® and include the phrase “Theraplay® is a registered service mark of The Theraplay Institute, 1840 Oak Ave., Suite 320, Evanston, IL 60201, USA.”

## The Theraplay Supervision Experience

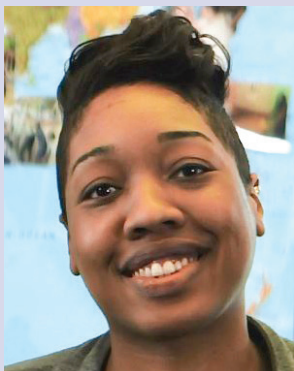
We believe that true learning starts with expert supervision/consultation. As a participant in our practicum, you will receive professional, relevant and timely feedback of your Theraplay work to develop your skills. All of our supervisors have achieved the highest skill level in their Theraplay work through years of practice and receiving their own supervision.

We have UK-based supervisors who can work with you in person, via on-line and web applications or in group cohorts of four. Supervision is also available on-line with English speaking supervisors around the world.

Theraplay Supervisors are not responsible for your work. This responsibility remains with the employer and student, and all Theraplay students should continue to receive supervision of their work by their regular supervisor and be covered for professional indemnity.

## Getting Started

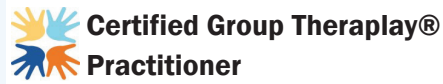
Your initial application to the practicum will be sent to The Theraplay Institute in the U.S. Our staff will help you get started, find you a supervisor if you don't already have one in mind, confirm your qualifications, and answer all of your questions.



*My name is Robin Shannon and I am the Practicum Manager. In my position, I can answer specific questions about Supervision options, Levels of Certification or make suggestions about supervisor matches. I am also who you will contact to apply for the practicum and I will help keep track of your progress, eventually sending you your certificates. I coordinate practicum cohorts, oversee the web group supervisions and can assist with any technology questions as well. I am usually available Monday-Thursdays by phone or email to answer any questions and Fridays primarily by email.*

**Complete practicum information is available from your supervisor  
or from Robin Shannon, Practicum Manager (email [robin@theraplay.org](mailto:robin@theraplay.org))**

# Theraplay Training Routes



The usual start point for anyone interested in Theraplay. Ideal for people working with children and families. Focus on dyadic work (parent and child.) Good start point for anyone moving into focused therapeutic family work.

A certificate is awarded at each stage of the practicum. The end qualification is a Certified Theraplay Practitioner. Each certificate states the person's qualification followed by their professional background e.g. Social worker, teacher, psychologist. Those who are registered with the HCPC, BACP, NCA, PSA can progress through the full practicum. Others may earn Foundational status.

**Theraplay Level One & MIM training**

8 supervised sessions

**Foundational Theraplay Practitioner**

7 supervised sessions plus certification review

**Attend Theraplay Level 2 & MIM Training**  
(This course can be taken at anytime before midterm)

**Intermediate Theraplay Practitioner**

7 supervised sessions plus certification review

**Certified Theraplay Practitioner**

**Apply to the Practicum**

**Group Theraplay Practitioner**

7 supervised sessions plus certification review

**Foundational Group Theraplay Practitioner**

7 supervised sessions plus certification review

**Certified Group Theraplay Practitioner**

Those with a registered accreditation or who are **lead teachers** may earn Certified Group Theraplay Practitioner. All others, such as behavior support, pastoral workers and the like, may earn Foundational Group Theraplay Practitioner status.

Group Theraplay is aimed at people working in non-clinical settings such as early years, schools or other group work to support the delivery of the social emotional and curriculum or social skills development.



For more information about the certification process email [robin@theraplay.org](mailto:robin@theraplay.org)

If you need help deciding which practicum track is right for you, please contact our practicum staff.

## Practicum Summary Theraplay Practitioner Track

### Foundational Theraplay Practitioner

Both those with and without professional accreditation start here.

**Step 1:** Complete the four-day Level One Theraplay & MIM training

**Step 2:** Apply to the Practicum by sending required documents to The Theraplay Institute

**Step 3:** Complete eight consultations with your supervisor and 32 additional unsupervised Theraplay sessions. Score an average of 3 (out of 5) on our Theraplay best practice assessment as rated by your supervisor. **THOSE WITHOUT AN ACCREDITED PROFESSIONAL AFFILIATION WILL STOP HERE WITH A FOUNDATIONAL THERAPLAY PRACTITIONER CERTIFICATE. YOU ALSO QUALIFY TO TAKE LEVEL TWO THERAPLAY AND MIM TRAINING TO IMPROVE YOUR SKILLS.**

### Intermediate Theraplay Practitioner

Those with professional accreditation who have earned the Foundational certificate can continue with their training and certification.

**Step 4:** Complete a minimum of seven more consultations with your supervisor and 32 additional unsupervised Theraplay sessions.

**Step 5:** Complete Level Two Theraplay & MIM training (can be done any time during the first half of the practicum).

**Step 6:** Upon recommendation of your supervisor, submit a session for “midterm” review to The Theraplay Institute to be completed by a supervisor other than your regular one. Score an average of 3.5 on the Theraplay best practice assessment.

### Certified Theraplay Practitioner

**Step 7:** Complete a minimum of seven more consultations with your supervisor and 32 additional unsupervised Theraplay sessions.

**Step 8:** Upon recommendation of your supervisor, submit a session for final review to The Theraplay Institute to be completed by a supervisor other than your regular one. Score an average of 4 on the Theraplay best practice assessment.

## Practicum Summary Theraplay Group Practitioner Track

### Foundational Group Theraplay Practitioner

Both those with and without professional accreditation start here.

**Step 1:** Attend the two-day Group Theraplay training

**Step 2:** Apply to the Practicum by sending required documents to The Theraplay Institute

**Step 3:** Complete eight consultations with your supervisor and 32 additional unsupervised Group Theraplay sessions. Score an average of 3 (out of 5) on our Theraplay best practice assessment as rated by your supervisor on the eighth session. **THOSE WITHOUT AN ACCREDITED PROFESSIONAL AFFILIATION WILL STOP HERE WITH A FOUNDATIONAL GROUP THERAPLAY PRACTITIONER CERTIFICATE.**

## **Certified Group Theraplay Practitioner**

Those with professional accreditation who have earned the Foundational certificate can continue with their training and certification.

**Step 4:** Complete seven more consultations with your supervisor and 32 additional unsupervised Theraplay sessions.

**Step 5:** Submit a session for final review to The Theraplay Institute to be completed by a supervisor other than your regular one. Score an average of 4 (out of 5) on the Theraplay best practice assessment.

## **Becoming a Theraplay Trainer or Supervisor**

Those who become fully certified as either a Theraplay Practitioner or Group Theraplay Practitioner may qualify to enter the practicum to become a Trainer or Supervisor. Your Theraplay supervisor will be asked to recommend you. While still in the practicum, you may act as a paid training assistant with the recommendation of your supervisor. Please contact our practicum staff for more information.

## **Maintaining Good Standing**

All levels of certificate holders must re-register with The Theraplay Institute every year and pay an annual registration fee based upon their certificate level. In addition, Certified Theraplay Practitioners and Certified Group Theraplay Practitioners must fulfill a continuing education requirement every three years.

**Please refer to our [Certification Procedures documents](#) for complete information about our protocols.**



## Costs

Fees will vary depending upon whether you are working with a UK supervisor or a US based supervisor. If working with a US supervisor, all fees are paid in dollars via the Theraplay website. If working with a UK supervisor, administrative and certificate fees are also payable in dollars on the Theraplay website. UK supervisors are paid directly per supervision session and set their own fees, typically £60-£70 per session. The example below does not include the cost of required training. Here is a breakdown based upon the £70/session rate and current exchange rates:

### Foundational Certificate

Registration Fee \$400  
8 supervisions @ £70 = £560  
**Total £860**

### Undertaking the full practicum

Registration fee \$400\*  
8 supervisions @ £70 = £560  
**Total £860**

### Intermediate Fee and Midterm exam \$400\*

7 supervisions @ £70 = £490  
**Total £790**

### Certified Fee and Final exam \$400\*

7 supervisions @ £70 = £490  
**Total £790**

**£2,440 TO FINISH**

\*Fees must be paid prior to undertaking supervision in this level.

NOTE: The registration fee for the Foundational Level includes a \$200 non-refundable fee.

### Undertaking Foundational Group Theraplay Status Only

Registration fee: \$400  
7 sessions @ £70: £490  
**Total: £890**

### Undertaking Group Theraplay Practitioner Certificate

Foundational fee/  
Midterm review: \$400  
7 sessions @ £70: £490  
Certified fee/  
Final Review \$400  
7 sessions @ £70: £490  
**Total: £1,780**